

Australian Eating Disorders Research & Translation Centre

INSIDEOUT
Institute for Eating Disorders



Welcome



**Acknowledgement
of Traditional
Owners**



Acknowledgement of
Country

Acknowledgement of
Lived Experience

The Consortium

INSIDEOUT
Institute for Eating Disorders

ory
gen



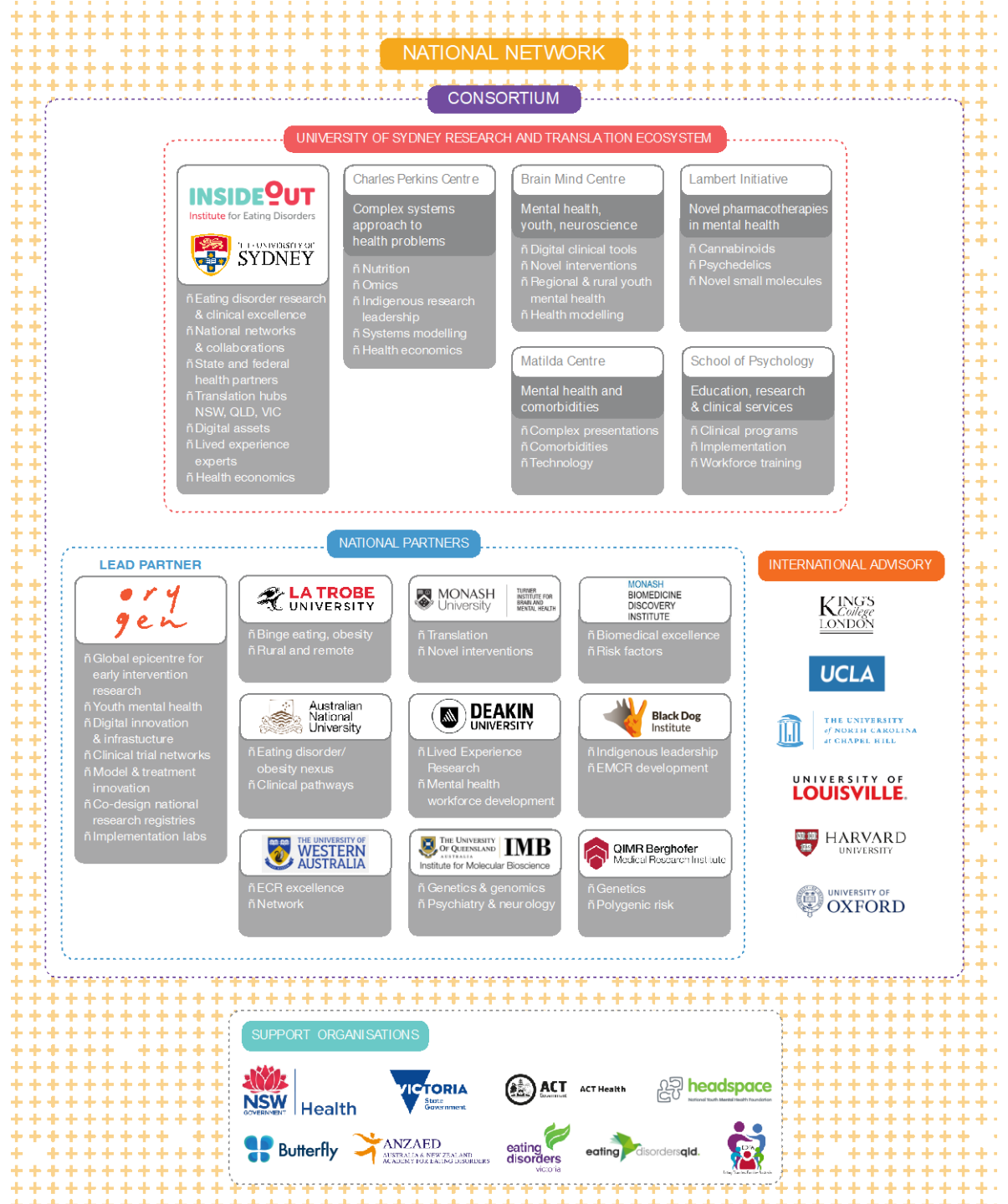
MONASH
BIOMEDICINE
DISCOVERY
INSTITUTE



USyd Matilda Centre +
School of Psychology



The Ecosystem



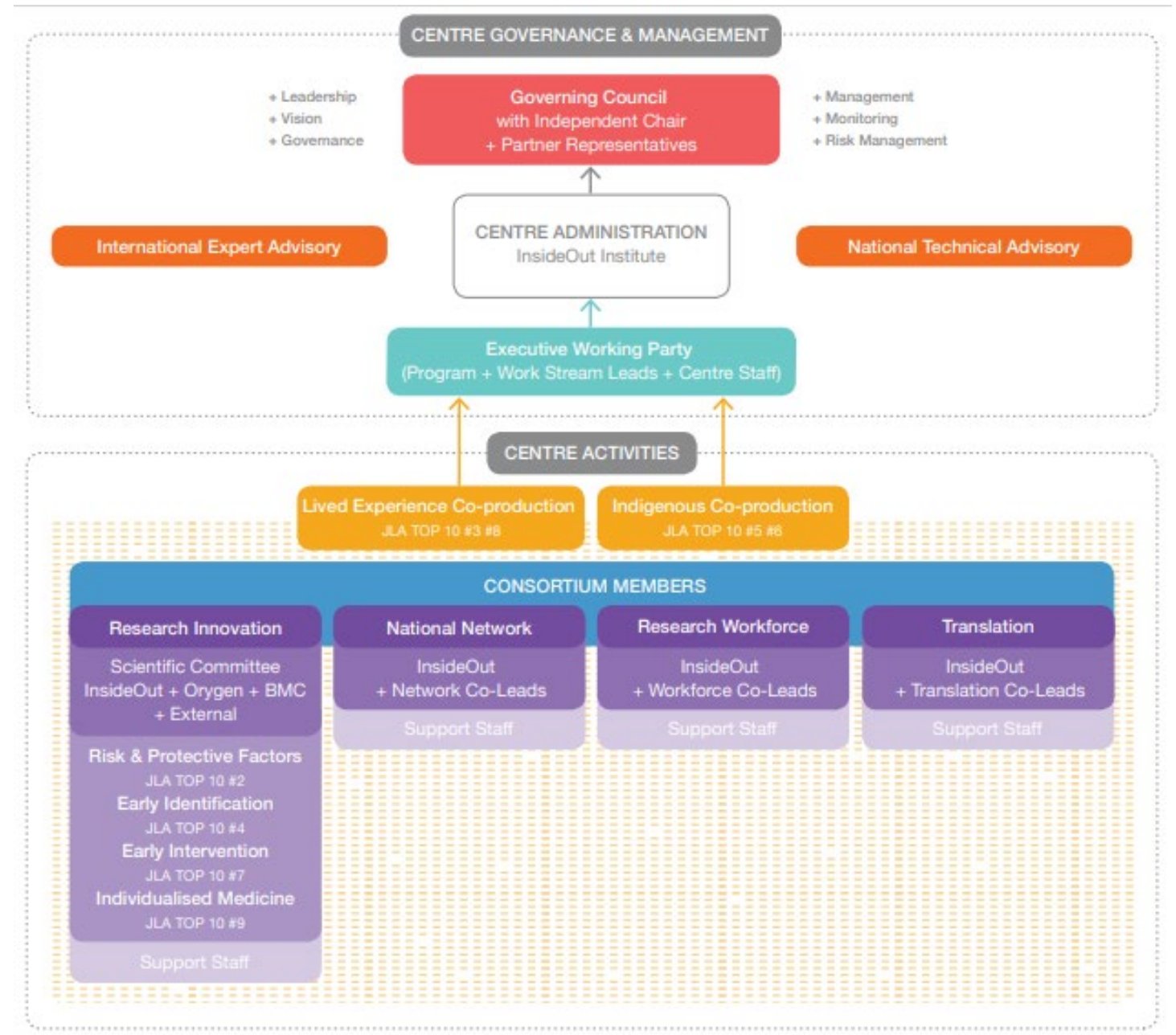
GOALS

1. Establish robust, well governed, co-produced, inclusive, sustainable national research and translation leadership for the field of eating disorders
2. Set the national standard for co-production (with experts by lived experience, Aboriginal & Torres Strait Islanders, people from diverse backgrounds and clinicians), as part of routine practice in research and its translation
3. Implement the Australian Eating Disorders Research & Translation Strategy
4. Support and generate an inclusive and sustainable culture of research excellence
5. Conduct and coordinate high-quality research & translation that impacts outcomes and addresses Australia's Top 10 eating disorder research & translation priorities
6. Produce research and translation outcomes grounded in real world settings that inform policy and lead to practice change
7. Support improved access to high-quality mental health care for people with eating disorders and their families through research and translation activities.

Governance



Chair: Robyn Kruk AO

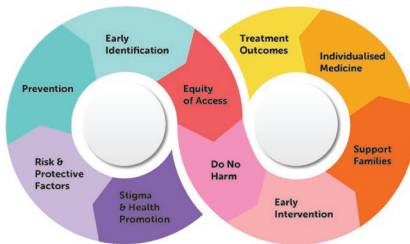


Centre Activities

Australian Eating Disorders Research & Translation Strategy 2021-2031

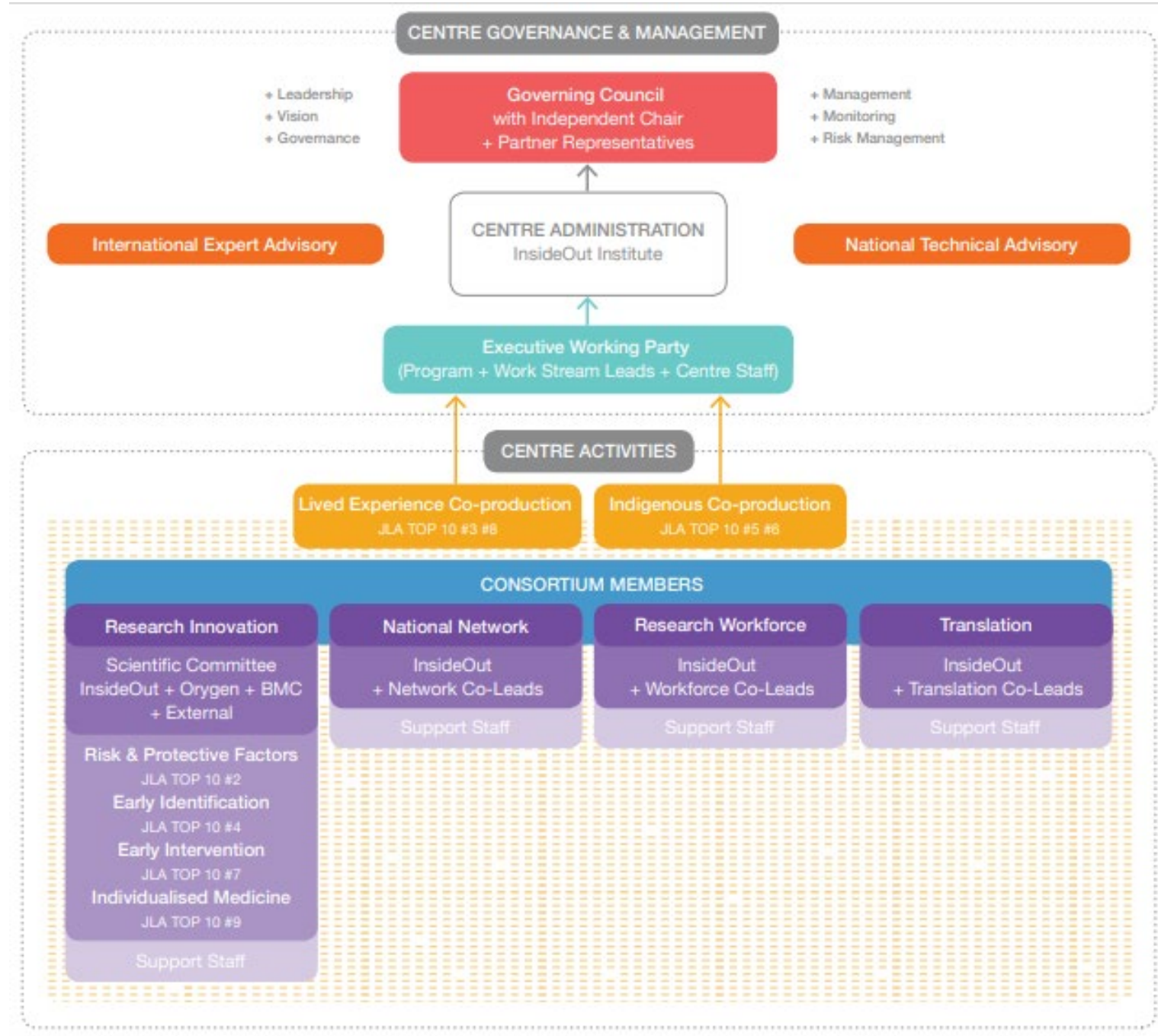


2021: Top 10 areas for eating disorder research to investigate



Co-designed using an aligned James Lind Alliance Priority Setting Partnership process

INSIDEOUT
Institute for Eating Disorders



International Advisory

Prof Janet Treasure



Prof Cindy Bulik



Prof Daniel Le Grange



A Prof Cheri Levinson



A Prof Kamryn Eddy



A Prof Rebecca Murphy



National Technical Advisory

Prof Michael Berk
Lead, MAGNET Clinical Trial Network



Prof Jennie Hudson
Director of Research



Prof Frances Kay-Lambkin
President, Society of Mental
Health Research.



A/Prof Michelle Banfield
Lead, ANU Lived Experience Research Unit
ALIVE Chief Investigator



Operations

- Governing Council with members from the Consortium, external reps and Lived experience will provide robust governance & monitor all decisions and outputs of the Centre
- Chief Operating Officer Peta Marks will plan and coordinate the activities of the Centre
- Each program and stream of work will be co-led by Consortium members
- All work streams will have their own stakeholder engagement processes and advisory processes
- Post-doctoral positions will support all work streams
- A small team at IOI will administer the Centre, and support all activities to be delivered
- Contract 1st April 2022 – 30 June 2025

Lived Experience Co-Production Program



Shannon Calvert
Lived Experience Consultant



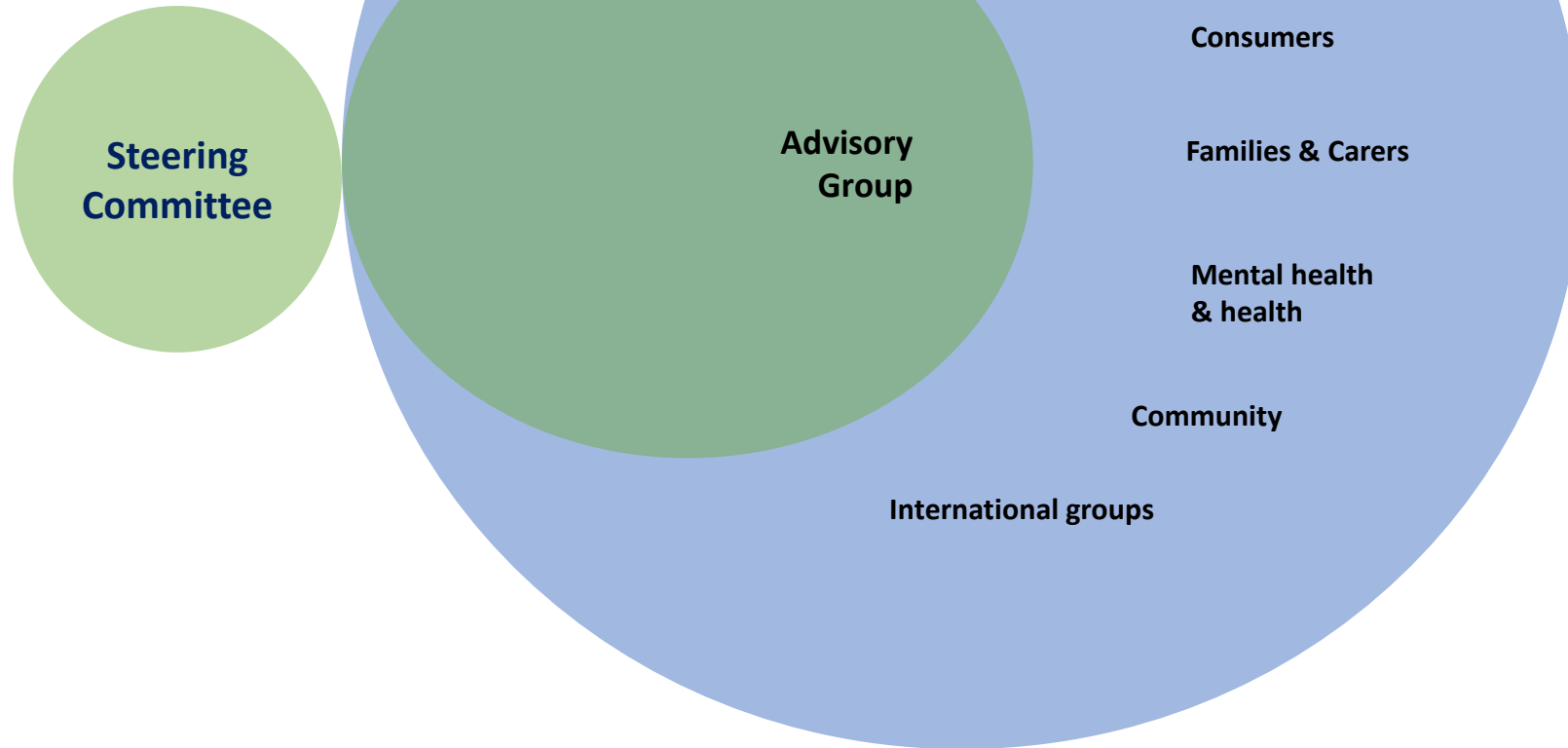
A Prof Genevieve Pepin



Lived Experience Co-Production

- All activities of the Centre will observe a co-production process
- Consumer and Carer representation on the governing council
- Aim to set national standards for co-production in ED research
- Provide resources for co-production to research teams nationally
- Lead lived experience research, outputs and translation activities
- Ongoing engagement with lived experience organisations both nationally and internationally
- Living voice and underrepresented lived experience will be included

Lived Experience Consultation



Aboriginal & Torres Strait Islander Strategy



Lelani Darwin, Director,
Aboriginal and Torres Strait
Islander Strategy



**Black Dog
Institute**

**ADD PIC OF STACY
VERVOOT**

Aboriginal & Torres Strait Islander Strategy

- Work in partnership with leaders of the Aboriginal & Torres Strait Islander Mental Health Strategy at Black Dog Institute to integrate First Nations expertise across the governance & activities of the Centre
- The Aboriginal and Torres Strait Islander Eating Disorders Co-Production will contribute Indigenous leadership and innovation to governance and all activities of the Centre
- Develop an Aboriginal and Torres Strait Islander Eating Disorder Researcher Strategy built on the social justice imperative, underpinned by the concepts of respect, empowerment and self-determination – in consultation with community
- Integrated with the Lived Experience Program to ensure research and translation co-design and activities directed towards closing the gap
- Will have its own research and outputs



A Prof Elizabeth Rieger

INSIDEOUT
Institute for Eating Disorders



Prof Stephen Touyz



Australian
National
University

1. National Network

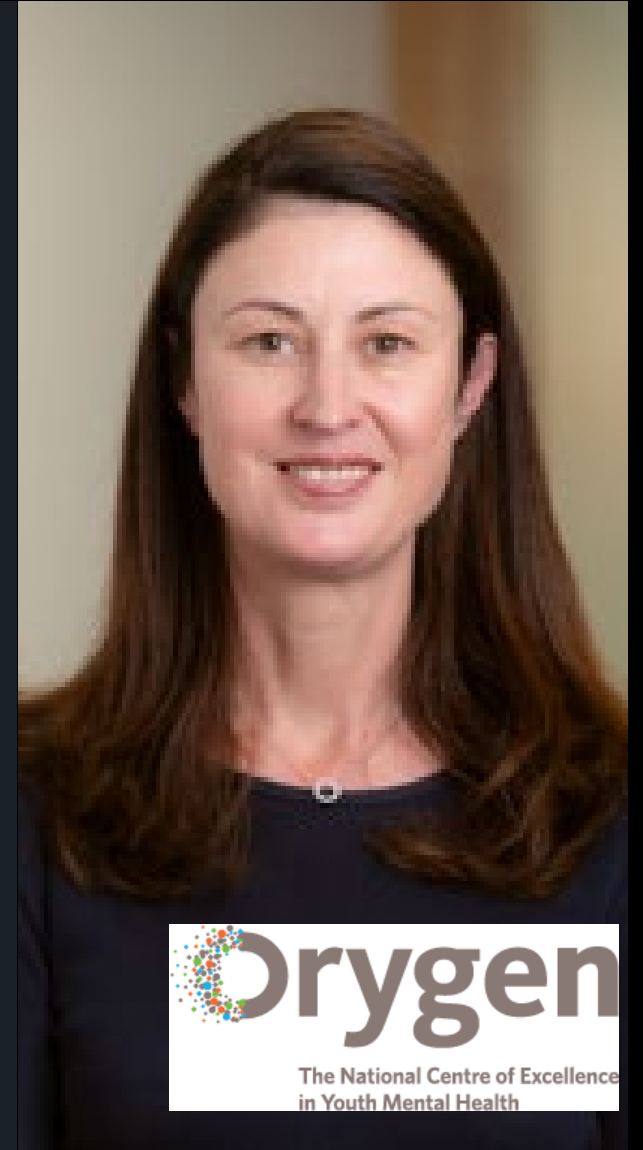
National Research & Translation Network

- Establish a broad-reaching national research & translation network that links researchers, clinicians, lived experience experts and policy makers
- Purposeful network aimed at driving new teams and supporting the establishment of new projects
- Digital Hub to support the network, designed to create new team links and new project development
 - access to research opportunities and projects
 - access to researcher workforce development opportunities
 - access to research and translation skillsets that complete co-designed teams
 - research relevant communication to drive forward research, investment and output
- Will leverage and integrate with existing research networks in particular the clinical trial networks
- Network will provide practical support to consortium and network members
- Broaden network connections to establish collaborations (when strategic) with professional colleges, research peak bodies, health systems, industry partners & government agencies

2. Translation



Professor Antonio Verdejo-Garcia
Turner Institute, Monash University



Professor Rosemary Purcell
Orygen

Translation Work Stream

- To ensure the translation of the best existing evidence into practice nationally a blueprint is needed
- For the funding and timeframe available broadscale translation was deemed beyond scope
- Step One: a costed national Translation Blueprint consistent with the AEDR&TS
- Engage with clinical PhD programs to establish and expedite translation focused projects nationally, coordinated and supported through the Centre;
- Support higher degree research students to engage with community and clinical services to conduct research projects at the point of care
- Support outcomes evaluation research in eating disorder settings
- Establish a train-the trainer-research model: deploy HDR research candidates to upskill their local clinical workforce with newest research & evaluation methods and tools
- PhD top-ups for translational research PhD projects consistent with Top 10

3. Research Workforce Development



Associate Professor Leah Brennan



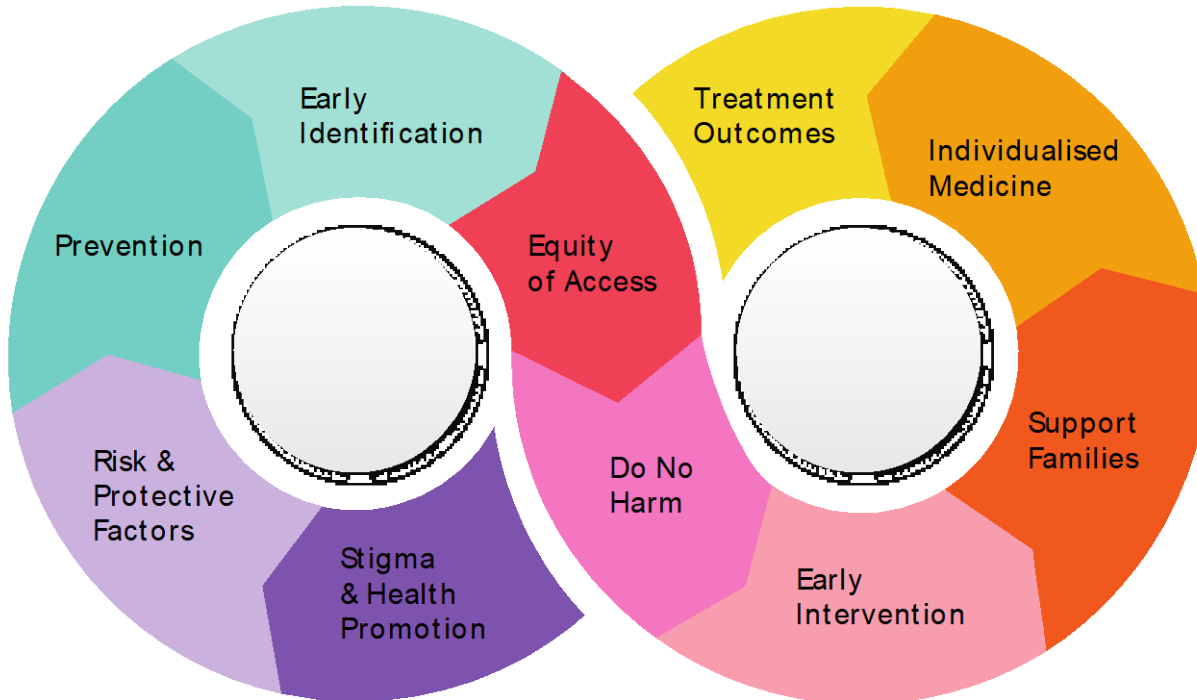
Dr Claire Foldi

Research Workforce Development

- A major focus of the Centre
- Increasing Clinical and Lived Experience Researchers
- Drive creation of additional ECR places across all consortium organisations and further places through the network
- Create training and support programs (including specific to lived experience & clinical research) to develop the emerging research workforce
- Support competitive funding track record development and maintenance strategies to keep the best and brightest engaged
- Establish a Next Generation Researcher Hot House Program including mentorship and support for EMCR
- Work with eating disorder services & community providers to establish clinical research internships
- Conduct workshops by lived experience to learn about research and evaluation methodology and the co-production cycle.

4. Research

2021: Top 10 areas for eating disorder research to investigate



Co-designed using an aligned James Lind Alliance Priority Setting Partnership process

INSIDEOUT
Institute for Eating Disorders

CENTRE RESEARCH FOCUS AREAS 2022-2025

1. Risk & protective factors
2. Very early intervention [Early identification and Early Intervention]
3. Individualised medicine

Additionally:

- Lived Experience
- Aboriginal & Torres Strait Islander

How research will be funded

- For the three main pillars of research applications from Consortium members in collaboration with network members
- Scientific Committee will assess and award funding
- Criteria
 1. novel co-designed research teams
 2. potential for high-impact
 3. alignment with the Top 10
 4. alignment with AEDR&TS principles of co-design, diversity, collaboration and impact
 5. Methodological rigour
 6. value for money/cost-effectiveness
- Additional funding calls will have bespoke criteria
- IgnitED is the first research funding initiative of the Centre will be announced late March – ten 25K grants for bright new ideas

Other Activities of the Centre

- Innovation Think Tanks
- Leverage, Investment and Advocacy Plan
- Research Symposium
- Progress the development of an Eating Disorders Research Platform - modeled on UNSW's CHeBA Dementias Platform Australia and integrated with existing mental health clinical trial networks efforts

Thank you!
We look forward to welcoming
you into the Network and
working with you